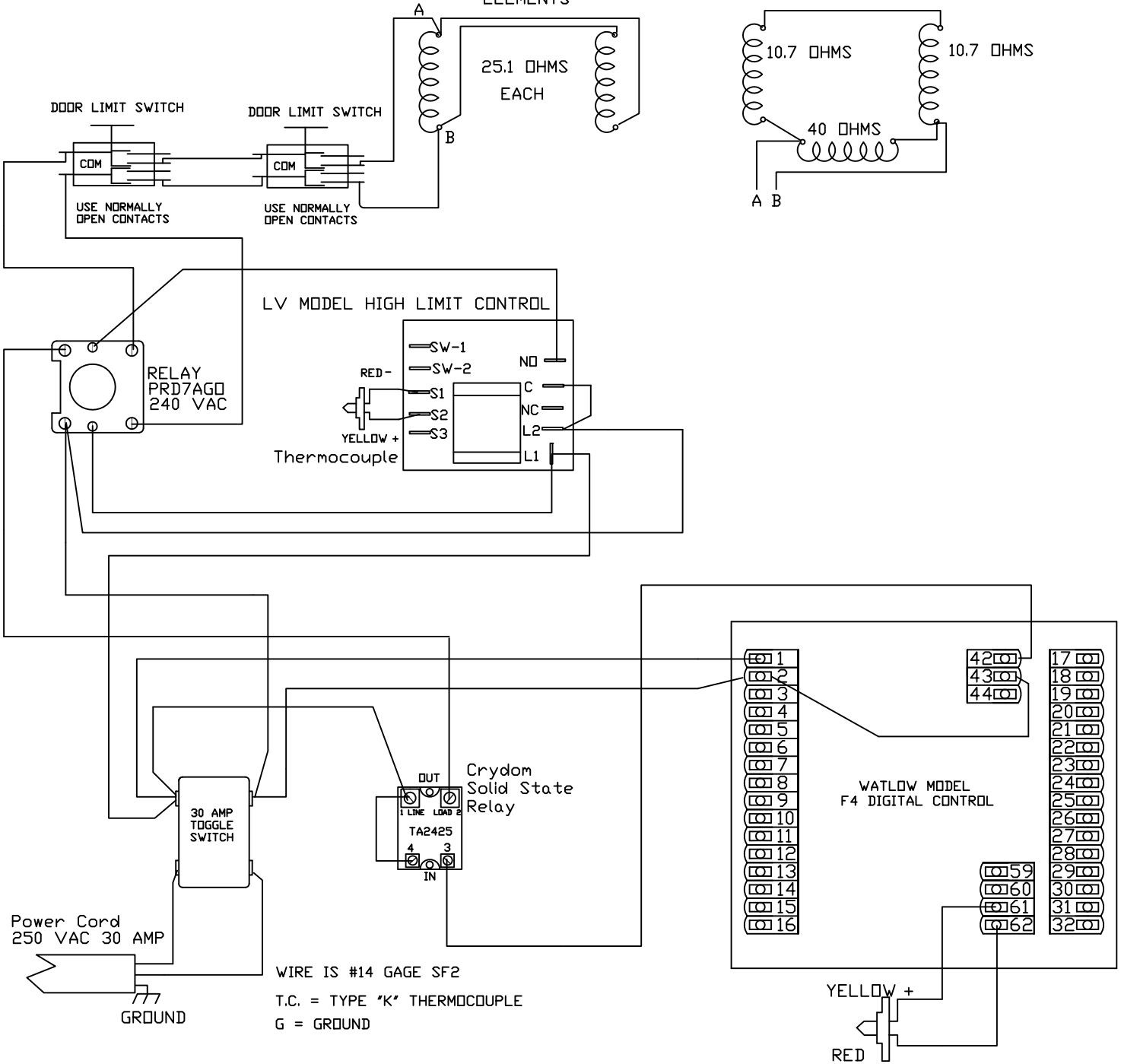


C-136/F4 HLC
 208 VOLT, 17 AMPS
 C-133/F4 HLC
 208 VOLT, 15 AMPS

MODEL
 C136TCZ
 ELEMENTS

MODEL
 C133TCZ
 ELEMENTS



WIRE IS #14 GAGE SF2
 T.C. = TYPE "K" THERMOCOUPLE
 G = GROUND

Thermocouple